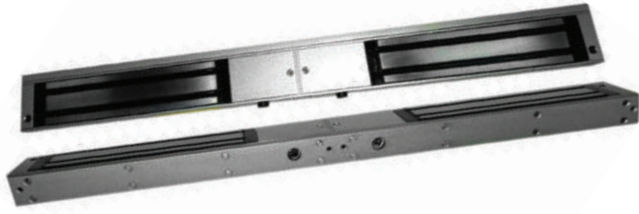


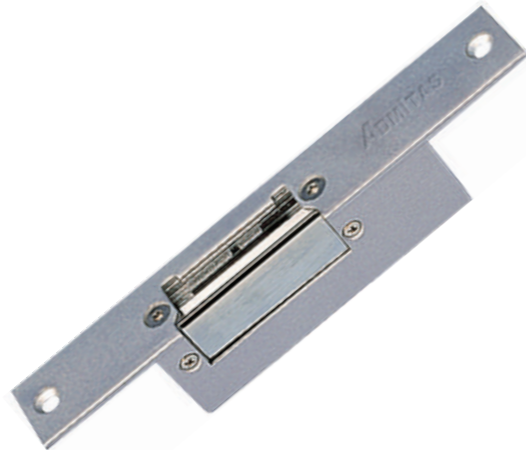
**Double Door Magnetic Lock
PRL-900**



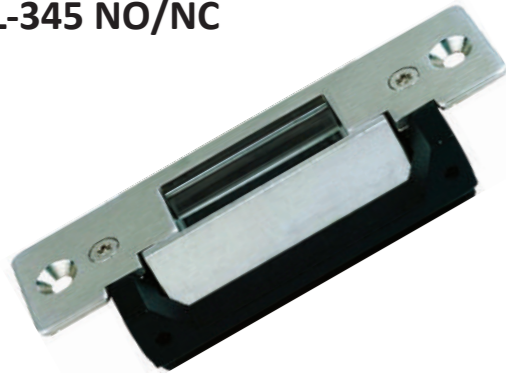
MODEL	PRL-901
Lock Size (LxWxH)	500x3105x22.5mm
Armature plate	180x38x11(mm)x2
Holding Force	560Kg (1200lbs)
Voltage / Current	DC12V/ 300mA(24V DC 150mA adjustable)
LED	Yes
Signal Output	Yes
Time Delay	Yes, 0, 3, 6, 9Sec
Applications	Wooden, Glass, Metal, Fireproof door
Surface Temp	<+20° C
Material	Anodized Aluminium
Magnetic & Armature	Zinc
Weight	4Kg
Brackets	PRL-280UL, PRL-280L/LC, PRL-280ZL

**Narrow Type Electric Strike Fail Secure
PRL-352 NO/NC**

MODEL	PRL-352 NO/NC
Face plate	160x25x28mm
Standard Structure	Stainless Steel
Dual Voltage	DC 12V
Current Draw	PRL-352NO/450mA PRL-352NC/200mA
Fail Safe	Locked when energized (PRL-352NC)
Fail Secure	Locked when unenergized (PRL-352NO)
Safety function	Built-out voltage spike suppressor
Performance testing	100,000 test
Opening Mode	90° swinging door
Suitable for	Wooden door, Metal door, Fireproof door
Certification	door
Net Weight	CE & MA approved

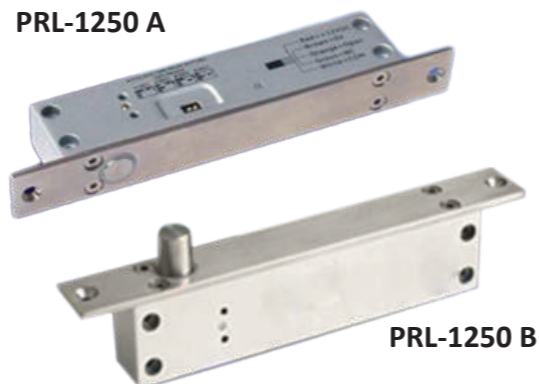


**American Standard Electric Strike
PRL-345 NO/NC**



MODEL	PRL-345 NO/NC
Lock Size	124x32x33mm
Standard Structure	Stainless Steel
Dual Voltage	DC 12V
Current Draw	250mA
Fail Safe	Locked when energized (PRL-345NC)
Fail Secure	Locked when unenergized (PRL-345NO)
Safety function	Built-out voltage spike suppressor
Opening Mode	90° swinging door
Suitable for	Wooden door, Metal door, Fire, proof door
Certification	door
Net Weight	CE & MA approved

**Single Door Electric Bolt Lock
PRL-1250A/PRL-1250B**



MODEL	PRL-1250 A	PRL-1250 B
Type	Fail safe Sturdiness	Fail Secure
Material	Sturdiness	
Face Plate	Stainless Steel	
Strike	192x25x37mm	
Bolt	100x25x3mm	
Voltage	17mm	
Start Current	12V DC	
Standby Current	900mA	
Signal	120mA	
Time Delay	Yes	
Open Wire	Yes,0,3,6,9sec	
Solid Bolt	Yes	
Applications	Polishing Housing, 1000Kg holding force	
Induction Distance	Wooden, Glass, Metal, Fireproof Door	
Special Designed	8mm	
Weight	Tested to 500000 Cycles	

**Stainless Steel Bracket for Frameless Door
PRB-800**



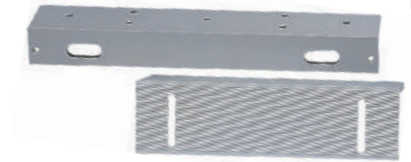
MODEL	PRB-800
Standard structure	Stainless steel panel
Suitable for	Glass door
Opening mode	180 degree swing door
Glass thickness	8~15mm
Net weight	0.5Kg

**Stainless Steel Bracket for Fully Frameless Door
PRB-900**



MODEL	PRB-900
Suitable for model	PRL-1250
Standard structure	Stainless steel panel
Suitable for	Fully frameless glass door
Opening mode	180 degree swing double door
Glass thickness	8~15mm
Dimensions (LxMxH)	205x58x46mm
Net weight	0.7Kg

**ZL Bracket for Inward Door 600 LBS
PRB-700 ZL**



MODEL	PRB-700 ZL
Standard structure	Aluminum panel with Elegant style
Suitable for	Wooden Door. Metal Door
Opening mode	Inswing
Net weight	0.7Kg

**L Bracket for Narrow Door 600 LBS
PRB-700 UL**



MODEL	PRB-700 UL
Suitable for model	PRL-700
Suitable for	Frameless glass door
Standard structure	Aluminum panel with Elegant style
Opening mode	Inswing or Outswing
Glass thickness	8~15mm

**L Bracket for Narrow Door 1200 LBS
PRB-750 L**



MODEL	PRB-750 L
Standard structure	Aluminum steel panel with strongly style
Application	Narrow frame door
Opening mode	90 degree swinging door
Net weight	

**Aluminum Bracket for Narrow Door
PRB-700**



MODEL	PRB-700
Suitable for model	Electric Bolts PRL-1250
Standard structure	Stainless Steel panel
Suitable for	Glass door
Opening mode	180 degree swing door
Glass thickness	8~15mm
Net weight	0.5Kg